



Jeollanamdo Education: The Gateway to the Future

From learning to living,
our education will broaden students minds and
bring forth endless opportunities.

Through hard work and dedication,
we promise to build a strong foundation for our children,
so they may have a thriving future.

Jeollanamdo Education Opens Doors to the Future

The hardships we endure now will become learning opportunities for our future.

Jeollanamdo Education accepts these challenges head-on.

Not only will we overcome incoming obstacles; we intend to use lessons learned
as the foundation of a stronger future.

Because learning from today's hardships, prepares you for tomorrow.

Through smart investments and strong support, we can overcome any hurdle that comes our way.

We will design our own education platform that is modest but smart, small but strong.

It will be too late, if we hesitate.

By taking innovation one-step further, we will burst open the doors to the future.

From learning to living, our education will broaden students' minds and
bring forth endless opportunities.

We will not stop working towards these goals

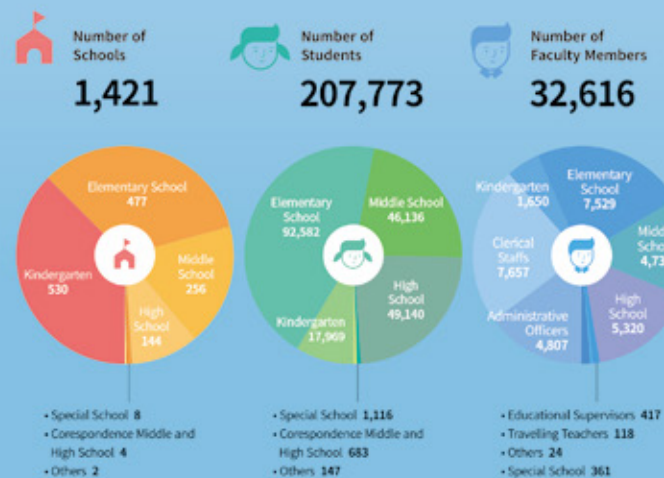
until every child in Jeollanamdo says, "I'm so proud of my Jeollanamdo Education."

Thank you.

Governor of Education for Jeollanamdo, *Suk-ung Jang*



Educational Statistics as of April 1, 2020



I get to manage my own study plan.
Planning goals for myself makes learning
much more enriching.

My classes are so fun!
I can't wait to go to
school each day.

Confident Students Eager to Learn An education designed for the new world.

We foster student-centered curriculum that enhances students' curiosity and
encourages dynamic engagement.

We help students develop lifelong skills to build on as they develop into their own career paths.

Standard Accountability Practices



Personalized lessons offered
to strengthen core basics.

- Decrease in the number of students per class (1st Year, Primary): 25
- Allocation of 40 teachers committed to ensure basic literacy and mathematics to academically challenged students.
- Core Education Support Center. Learning Clinic for Academically Challenged Students

Adolescents, Challenge Your Future Project



By gaining critical thinking skills, students
grow to become accountable to themselves.

- Student Responsibilities: Goal setting, planning, implementing, and evaluating
- Participation (all-inclusive) grade five ~ high school seniors: 537 teams
- Funding per team: 5million won (max.)

Edutech Creativity Convergence Education



Through innovative education,
we will prepare our students to lead the 4th
Industrial Revolution.

- Implementing SW-Mathematics-Invention centers: 22.
- Innovating school environment for creativity convergence: 149.
- Supporting student experience programs for creativity convergence: 225.



I will become a caring and respectful person.



I can realize my dream wherever in and outside of school.

Safe schools that foster autonomy and responsibility

We pledge to provide an education that leaves no child behind.

Provided a safe place, through Jeollanamdo Education, students will develop their own skills and fulfill their dreams.

Our alternative education is inclusive for all students with extenuating circumstances.

Democratic Citizenship Education



Students will learn to become active citizens with autonomy, respect, and cooperation.

- Evaluating school cultures using Jeollanamdo School Democracy Index
- Communication and participation-centered classes to foster democratic citizenship
- Democratic Citizenship schools: 24 (field support for Democratic Citizenship Education)

Restorative Practices in Schools



Community centric learning to enhance a peaceful school atmosphere

- Practicing positive reinforcement and feedback rather than criticism or punishment
- Building school culture respecting one another with empathy and compassion
- School elected themes: 137, peace and justice classes: 107

Support for Out-of School Youth



We provide all teenagers with equal opportunities to prepare for their future.

- GED (General Equivalency Diploma), free lunches, career counseling, certificate completion, etc.
- Increased support for all out-of school youth with extenuating circumstances
- "Where dreams come true" centers: 21 (special support classes for out-of school youth)



Now that our focus is on education itself, my classes have become more robust.

I aim to continue a transparent and honest administration.

Administration that is transparent and empathetic

Through innovation and trust, we will improve the public education.

Through student centric programs, we will enhance student learning.

With improved HR policies, transparency and innovation, we will continue to build a strengthened Jeollanamdo Education.

Innovative School Design



Jeollanamdo continues to strive for more eco-friendly and community-inclusive learning environment.

- Constructing learning environment through staff and students input and feedback
- Completely renovated schools(11) and areas(71) in Jeollanamdo
- Prioritizing health of students by using eco-friendly building materials

School Support Center



Support offered for teachers to enhance their professional development

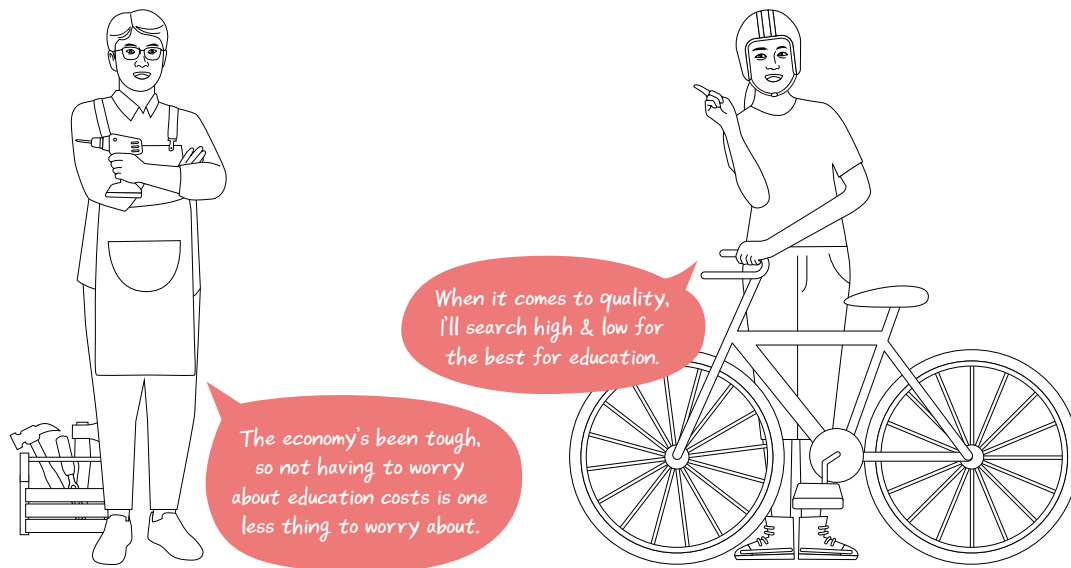
- Support for school administration in all areas of 22 cities in Jeollanamdo
- Implementing a "one-stop support system" for school violence
- Streamlined work processes to improve overall efficiency

School Budget Expansion



By encouraging school autonomy, we now offer further enhanced activities.

- School budget expansion: 10% for 2 years consecutively
- Offering schools more autonomy in regard to their budget(School elected themes and general maintenance budget)



Compassion & Equality in Education

Equal welfare and education opportunities for all.

Universal welfare opportunities offered regardless of socioeconomic status.

Each region works with their schools to develop colorful curriculum, bringing out the heart of each community.

No Cost Education



We are now able to provide completely free education at no cost to student families, two years ahead of the national government plan.

- A further reduction of 1.48 million won per year for every high school student (i.e., admission fees, tuition fees, school operation fees, textbooks and school uniforms)
- Additional support available for education expenses for families with multiple children or other welfare needs

Eco-friendly, Free School Meals



Green Food Initiative: We keep our students healthy by incorporating the freshest, locally grown foods and the community invigorated by supporting local farmers.

- Non-GMO Staples (Soy sauce, soybean paste, tofu, cooking oil and corn)
- Enforce eco-friendly agricultural products, implementation of Shintoburi Food Initiative

Rural School Support



Continue to bolster education in rural schools to reduce regional education gaps.

- Initiate special supplemental programs
- Implementing Edu-Taxi and Edu-Bus
- Increase rural school population, Increase foreign native speaker presence



Communication and Cooperation in Education

Where self-governed coordination creates a flourishing education system.

We put our ears on the ground to create enhanced, collaborative policies.

Schools, faculty, parents and the community work together to strengthen Jeollanamdo Education and create a better future.

Jeollanamdo Education Participatory Committees



The pillars of Jeollanamdo Education: Parents of students, Local residents and Community members

- Education Participatory Committees: 23 (Ordinance enacted in 2019)
- Student life policies developed by subcommittees
- Implemented enhanced female hygiene policies through committee input

Jeollanamdo Parents Association



We encourage parents' active involvement and continuous participation in education development.

- Parent Associations organized for preschool through high school students.
- Parent Associations are allocated working space and an annual budget.
- Continuing Education Development (Parent Support Center)

Local Community Education



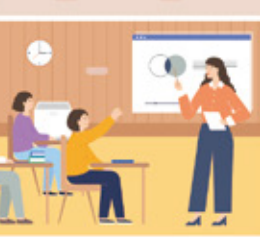
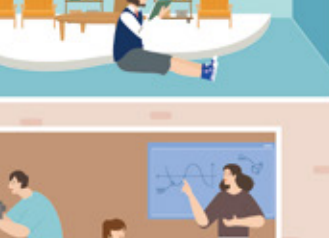
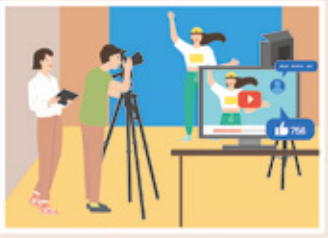
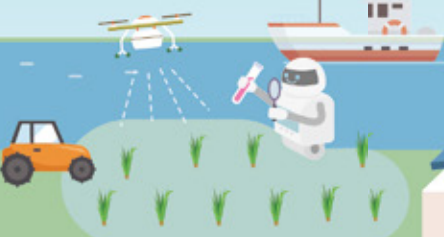
Rural Community Education Centers promote continued life-long learning & development.

- Growth from 3 centers in 2015 to 216 centers in 2020
- Rural Community Education Centers linked to School Programs
- Encouragement and continued support for active community participation linked through educational cooperatives.



Innovative Jeollanamdo Education

Knowledge is the bridge between school and a flourishing life.



Academic Advising Center

Career Counseling Center

Jeollanam Innovation Education Partners

Budget System

Education Environment Oversight Committee

Multicultural Education

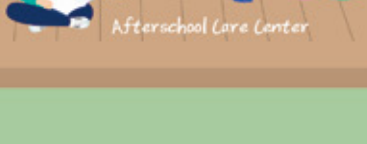
Life-long Education



Out-of-School Youth Support Center



Extracurricular Activities Support Center



After-school Care Center